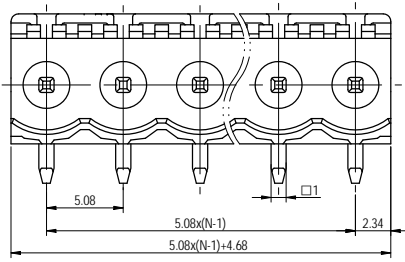
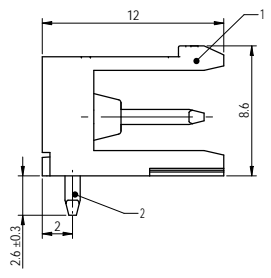
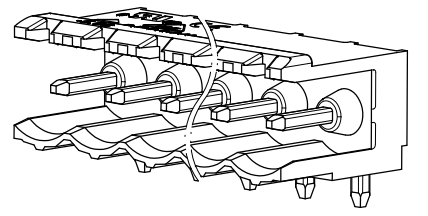
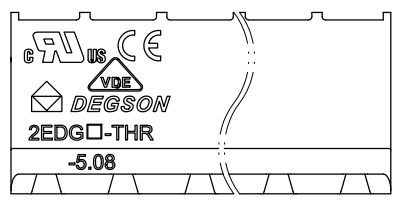
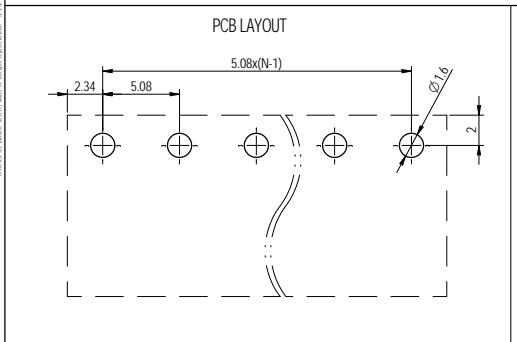
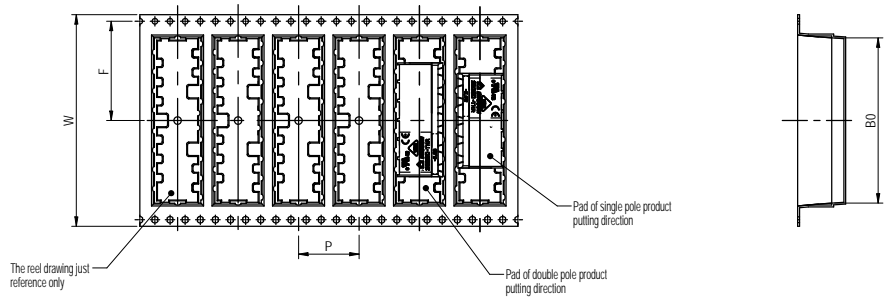
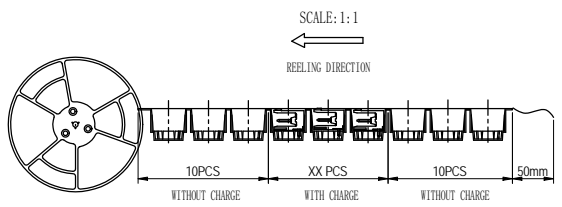


Reel Name	POLE	Width/W	Pitch/P	Width/F	Width/Bo	Qty. pre reel	Reel qty. per carton	Qty. per carton
2EDGRM-THR-5, 08-REEL (32)	02-04	32mm	16mm	14.25mm	20.62mm	330	8	2640
2EDGRM-THR-5, 08-REEL (56)	05-08	56mm	16mm	26.25mm	43.72mm	330	5	1650
2EDGRM-THR-5, 08-REEL (88)	09-12	88mm	16mm	42.25mm	71.42mm	240	3	720

公差/General tolerances(mm)											
0	>3	>6	>10	>18	>30	>50	>80	>120	>180	>250	>400
-	0.1	0.15	0.2	0.3	0.4	0.5	0.6	0.8	1.0	1.5	2.0
3	6	10	18	30	50	80	120	180	250	400	500
0.12	0.18	0.25	0.35	0.55	0.85	1.25	1.85	2.75	4.25	6.75	10



Note:  
The A&Z (H) in the name means: A(H) and Z(H).

ITEM	NAME OF PART	MATERIAL	NOTES
2	Pin	Copper	Sn Plated
1	Housing	Thermoplastic	UL94V-0

UL 标准/UL Standard	B	C	D
额定电压/电压/Rated Voltage(V)/Current(A)	300/15	/	300/10
IEC 标准/IEC Standard			
污染等级/Contamination Degree	III/3	III/2	II/2
额定电压/电压/Rated Voltage(V)/Current(A)	/	320/20	/
额定脉冲电压/电压/Rated Impulse Voltage(KV)	/	4	/
间距/Pitch(mm)/Lead Distance (mm)	5.08(N)-12P		
工作温度范围/Operating temperature(°C)	-40~+120		
符合RoHS环保要求/Conform to RoHS	Yes		
标准颜色编号/Standard color number: PANTONE / RAL	/		

MATERIAL:		SURFACE COLOR:	
MAT NO. REY: -	00	MAT STATUS:	数量
DATE: 2022.12.09	DATE: 2022.12.09	NAME: 2EDGR-THR-5, 08-XXP-1Y-00A&Z(H)	
REV: 00	REV: 00	DRAWING NO.:	200019648
DESCRIPTION:	CUSTOMER DRAWING	DRAWING STATUS:	已发布
SCALE:	4:1	SHEET:	1/1

Drawing of addition of the drawing, and the modification or replacement of it, without the approval of the drawing officer, will be regarded as a violation of the drawing management system.