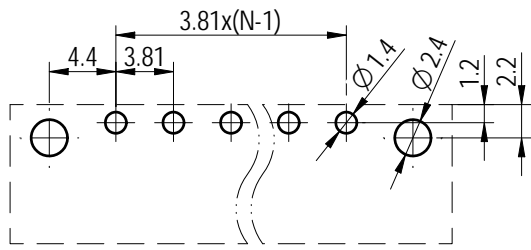


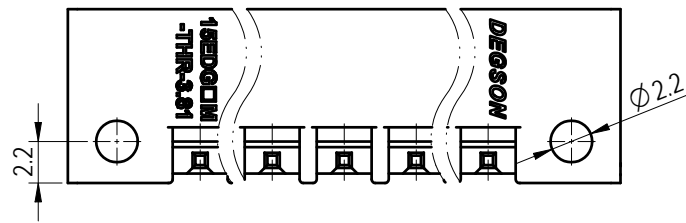
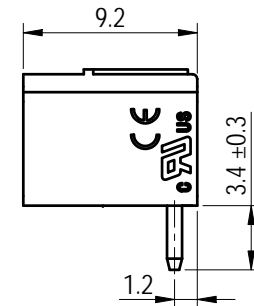
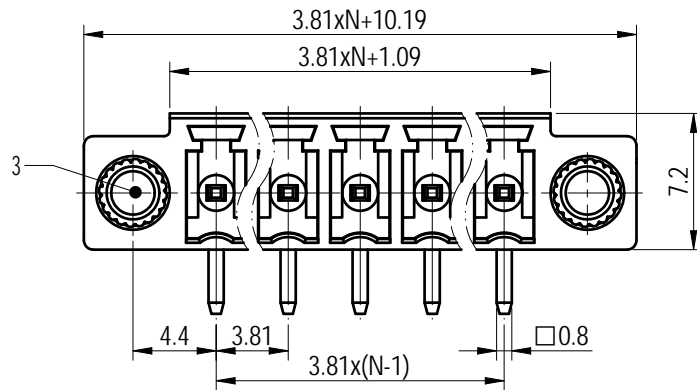
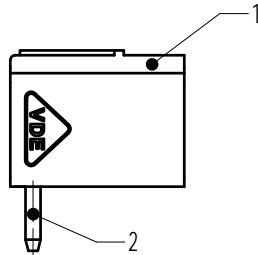
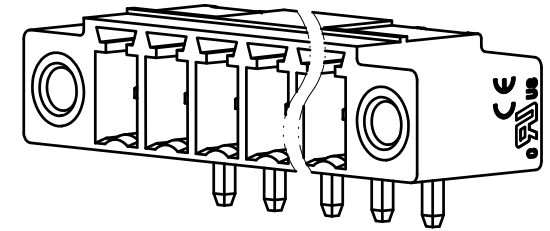
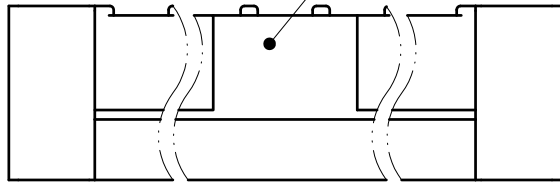
PCB LAYOUT

2:1



未注公差/General tolerances (mm)												0.1/10		
0 ~ 3	>3 ~ 6	>6 ~ 10	>10 ~ 18	>18 ~ 30	>30 ~ 50	>50 ~ 80	>80 ~ 120	>120 ~ 180	>180 ~ 250	>250 ~ 315	>315 ~ 400		>400 ~ 500	>500
±0.12	±0.18	±0.22	±0.26	±0.31	±0.37	±0.57	±0.80	±0.93	±1.05	±1.15	±1.60	±2.20	±2.50	±2'

The pad is positioned centrally above the existing positions



ITEM	NAME OF PART	MATERIAL	NOTES
3	Screw cap	Copper alloy	M2.5
2	Pin	Copper	Sn plated
1	Housing	Thermoplastic	UL94V-0

UL 标准/UL Standard:				B	C	D
额定电压/电流/Rated Voltage(V)/Current(A)				300/8	/	/

IEC 标准/IEC Standard:				B	C	D
过压类别/Overtoltage Category/污染等级/Pollution Degree				III/3	III/2	II/2
额定电压/电流/Rated Voltage(V)/Current(A)				/	/	250/8
额定脉冲电压(KV)/Rate Impulse Voltage(KV)				/	/	2.5
间距/Pitch(mm)/线数范围/Poles				3.81/N=02~12P		
使用温度范围/Operating temperature(°C)				-40~+130		
符合RoHS环保要求/Conform to RoHS				Yes		

		MATERIAL:	SURFACE/COLOR:			
APPD: 兰春华 2024.11.21		MAT NO./REV: - / 00	MAT STATUS: 批量			
CHKD: 龚耀志 2024.11.21		NAME				
DRFT: 方哲盛 2024.11.20		15EDGRM-THR-3.81-XXP-1Y-10A&Z(H)				
DRAWING NO. 200320135		TYPE	DRAWING STATUS	SCALE	SHEET	
A4		CUSTOMER DRAWING	已发布	2.5:1	1/1	

REV	ECN	DESCRIPTION	DRFT	DATE
00			方哲盛	2024.11.20

Transfer or duplication of this document as well as the utilization or communication of its content are prohibited unless authorized in writing. All rights reserved for patent, utility model or design registrations. 除专利权明确标注外, 其他内容均受专利、实用新型及外观设计保护。未经许可, 不得复制或传播。本公司保留对涉及发明、实用新型及外观设计的所有权利。