

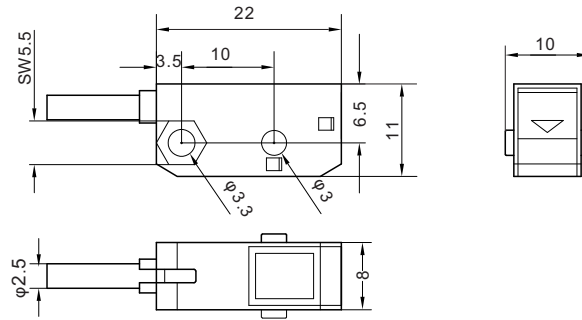
DPSJSeries



Model	
NPN L.on	DPSJ-T150NO
PNP L.on	DPSJ-T150PO
Basic Features	
Working principle	Photoelectric Sensors
Enclosure style	Square
How optics work	Counter- shooting
Detection distance	1500mm (fixed)
Spot size	N/A (Infrared)
Detection	Ø6mm
Light source	Infrared 850nm (modulated)
Light	Output function: Yellow LED (receiver), Operating status: Green LED (transmitter)
Sensitivity regulation	None
Electrical Data	
Switch mode	Light. on(light action) / Dark. on (light blocking action) can be switched
Output mode	NPN or PNP open collector
Response time	3.3ms
Switching frequency	0.06 kHz
Repeatability	/
Hysteresis(Return/ Response)	/
Operating voltage	12~24V DC
Current consumption	Transmitter ≤ 20mA; The receiver ≤ 20mA
Residual voltage	≤2.0V (50mA)
Load current	≤50mA (24VDC)
Insulation resistance	Between power terminal and housing ≥20MΩ (500VDC)
Resistance	1000VAC (50/60Hz), 1 minute between power terminal and housing
Protection circuits	Reverse polarity protection /short circuit protection
Environmental Conditions	
Operating ambient temperature	-20~50°C (no freezing)
Storage temperature	-30~70°C (no freezing)
Humidity of the working environment	35~90%RH (no condensation)
Store humidity	35~90%RH (no condensation)
Ambient illumination	Incandescent lamps ≤ 3000 Lux; Sunlight ≤ 10000 Lux
Anti vibration -	10~50Hz sweep, 1.5mm amplitude, XYZ 3 directions for 2 hours each
Ingress protection	IP64
Mechanical Data	
Maximum tightening torque	≤0.5Nm
Connection	2m/3 core cable
Size	10.0x22.0x11.0mm
Material	PC/ABS
Weight	0.042kg
Fittings	无 None

DPSJSeries

Dimensions



Unit: mm

Wiring Diagram

