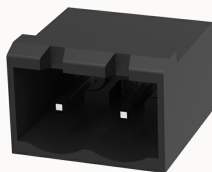


Overview

Product information



2EDGRC-THR-5.08-10030001778

Pluggable Terminal Blocks nominal current 20A. Rated voltage (III/3): 320V, pitch: 5.08mm, Color: black, Contact surface: Tin

Product advantages

- ☑ Suitable for SMT welding process
- ☑ The plug direction is parallel to the PCB, Can meet the needs of different connectors

Product certification



Technical data

Product drawing

3D model

□

Processing notes

Process

Reflow soldering/wave soldering/manual soldering

Electrical parameters UL

Rated voltage (B)	300V
Rated voltage (D)	300V
Rated current (B)	15A
Rated current (D)	10A

Electrical parameters IEC

Rated voltage	320V
Rated current	20A

Rated voltage(III/2)	320V
Rated surge voltage(III/2)	4KV

Item properties

Connection direction	0°
Type of installation	PCB welding
Pin arrangement	Single row in a straight line
Pitch	5.08mm
Number of potentials	2
Pluggable or not	Yes
Number of rows	1

Material data

Environmental items	Compliant with REACH/RoHS
Contact material	copper
Contact point metal surface	tin-plated
Contact zone metal surface	tin-plated
Insulation Materials	High temperature resistant materials
Insulating material group	IIIa
Flammability rating	UL94V-0

Mechanical tests

Test Specification	IEC61984/ UL1059
--------------------	------------------

Environmental data

Ambient temperature (operation)	-40℃~130℃(depending on derating curve)
---------------------------------	----------------------------------------

Accessories

Tool

Screwdriver	/
Operating tool	/

Accessories

Coding strip	/
Bridge	/
Marking strip	/
Others	/

Business data

Order number	10030001778
Packing unit	
Minimum order quantity	
Products weight (without packaging)	