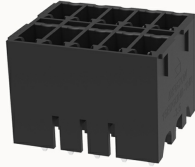


## Overview

## Product information

**15EDGVHB-THR-3.5-10030000869**

Pluggable Terminal Blocks nominal current 8A. Rated voltage (II/2):  
250V, pitch: 3.5mm, Color: black, Contact surface: Tin

## Product advantages

- ✓ Suitable for SMT welding process
- ✓ Universal installation method to ensure a high degree of flexibility in device design
- ✓ Multi-layer wire connection can achieve higher contact density

## Product certification



## Technical data

## Product drawing

## 3D model

□

## Processing notes

Process

Reflow soldering/wave soldering/manual soldering

## Electrical parameters UL

Rated voltage (B)	300V
Rated voltage (D)	300V
Rated current (B)	8A
Rated current (D)	8A

## Electrical parameters IEC

Rated voltage	160V
---------------	------

Rated voltage(III/3)	160V
Rated current	8A
Rated voltage(III/2)	160V
Rated voltage(II/2)	250V
Rated surge voltage(III/3)	2.5KV
Rated surge voltage(III/2)	2.5KV
Rated surge voltage(II/2)	2.5KV

Item properties

Connection direction	90°
Type of installation	PCB welding
Pin arrangement	Double-row in a straight line
Pitch	3.5mm
Number of potentials	10
Pluggable or not	Yes
Number of rows	2

Material data

Environmental items	Compliant with REACH/RoHS
Contact material	copper
Contact point metal surface	tin-plated
Insulation Materials	High temperature resistant materials
Insulating material group	IIIa
Flammability rating	UL94V-0

Mechanical tests

Test Specification	IEC61984/ UL1059
--------------------	------------------

Environmental data

Ambient temperature (operation)	-40°C~130°C (depending on derating curve)
---------------------------------	---

## Accessories

### Tool

Screwdriver	/
Operating tool	/

### Accessories

Coding strip	/
Bridge	/
Marking strip	/
Others	/

## Business data

Order number	10030000869
Packing unit	
Minimum order quantity	
Products weight (without packaging)	