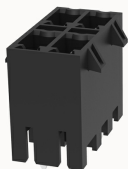


Overview

Product information



15EDGVHBN-THR-3.5-10030003409

Pluggable Terminal Blocks nominal current 7A. Rated voltage (II/2): 250V, pitch: 3.5mm, Color: black, Contact surface: Tin

Product advantages

- ☒ Suitable for SMT welding process
- ☒ Universal installation method to ensure a high degree of flexibility in device design
- ☒ Multi-layer wire connection can achieve higher contact density

Product certification

Technical data

Product drawing

3D model

□

Processing notes

Process

Reflow soldering/wave soldering/manual soldering

Electrical parameters UL

Rated voltage (B)

300V

Rated voltage (D)

300V

Rated current (B)

8A

Rated current (D)

8A

Electrical parameters IEC

Rated voltage

160V

Rated voltage(III/3)

160V

Rated current

8A

Rated voltage(III/2)	160V
Rated voltage(II/2)	250V
Rated surge voltage(III/3)	2.5KV
Rated surge voltage(III/2)	2.5KV
Rated surge voltage(II/2)	2.5KV

Item properties

Connection direction	90°
Type of installation	PCB welding
Pin arrangement	Double-row in a straight line
Pitch	3.5mm
Number of potentials	4
Pluggable or not	Yes
Number of rows	2

Material data

Environmental items	Compliant with REACH/RoHS
Contact material	copper
Contact point metal surface	tin-plated
Insulation Materials	High temperature resistant materials
Insulating material group	IIIa
Flammability rating	UL94V-0

Mechanical tests

Test Specification	IEC61984/ UL1059
--------------------	------------------

Environmental data

Ambient temperature (operation)	-40℃~130℃(depending on derating curve)
---------------------------------	--

Accessories	
Tool	
Screwdriver	/
Operating tool	/
Accessories	
Coding strip	/
Bridge	/
Marking strip	/
Others	15EDG-PWI

Business data	
Order number	10030003409
Packing unit	
Minimum order quantity	
Products weight (without packaging)	