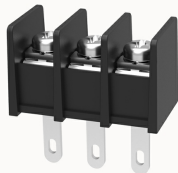


Overview

Product information



DG25H-B-12020000055

Single layer PCB fence terminal,nominal current15A.Rated voltage(UL): 300V,Rated cross section:22~14AWG,pitch:7.62mm,Color:black,Contact surface:Tin

Product advantages

- ☒ Screw connection for worldwide use
- ☒ Screw connection for worldwide use
- ☒ Solder board installation, which can realize the electrical connection between the device and the PCB

Product certification

Technical data

Product drawing

3D model

Connection capacity

AWG	22~14AWG
Torque	0.5N.m

Electrical parameters UL

Rated voltage (B)	300V
Rated voltage (D)	300V
Rated current (B)	15A
Rated current (D)	10A

Item properties

Type of installation	PCB welding
----------------------	-------------

Pin arrangement	Single row in a straight line
Connection method	Screw connection
Screwdriver	Phillips screwdriver
screw thread	M3
Pitch	7.62mm
Number of potentials	3
Pluggable or not	no
Number of rows	1

Material data

Environmental items	Compliant with REACH/RoHS
Contact material	Copper alloy
Contact point metal surface	tin-plated
Insulating material group	IIIa
Flammability rating	UL94V-0

Mechanical tests

Test Specification	UL1059
--------------------	--------

Environmental data

Ambient temperature (operation)	-40°C~105°C(depending on derating curve)
---------------------------------	--

Accessories

Business data	
Order number	12020000055
Packing unit	545
Minimum order quantity	/

Products weight (without packaging)	6.756
-------------------------------------	-------