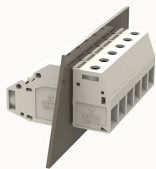


## Overview

### Product information



**DGV10-10090000027**

Through-wall terminal blocks, Rated current: 57A, Rated voltage (III/3) : 400V, width: 10.1mm, Color: gray, Contact surface :Tin

### Product advantages

- ☑ Screw connection technology,safe and reliable
- ☑ Through-wall installation, free positioning

### Product certification



## Technical data

### Product drawing

### 3D model

□

### Connection capacity

Conductor cross section solid	0.5~16mm <sup>2</sup>
Conductor cross section flexible	0.5~10mm <sup>2</sup>
AWG	24~6AWG
Torque	1.2N.m
Strip length	10mm

### Electrical parameters UL

Rated voltage (B)	300V
Rated voltage (C)	150V
Rated voltage (D)	300V

Rated current (B)	65A
Rated current (D)	10A
Rated current (C)	65A

Electrical parameters IEC

Rated voltage(III/3)	400V
Rated current	400V
	57A
Rated surge voltage(III/3)	6KV

Item properties

Type of installation	panel
Connection method	Screw connection
Screwdriver	Slotted screwdriver
screw thread	M4
Number of potentials	1
Pluggable or not	Yes
Number of rows	1

Material data

Environmental items	Compliant with REACH/RoHS
Contact material	copper
Contact point metal surface	tin-plated
Insulation Materials	PA66
Insulating material group	I
Flammability rating	UL94V-0

Mechanical tests

Test Specification	UL1059/IEC60998
--------------------	-----------------

#### Environmental data

Ambient temperature (operation)

-40°C~105°C(depending on derating curve)

#### Accessories

##### tool

screwdriver

0.8x4.0mm,Slotted screwdriver

Operating tool

/

##### Accessories

Coding strip

/

Marking strip

ZB10

Bridge

EB xx-10

Other

/

##### Accessories

Coding strip

/

Bridge

/

Marking strip

ZB10

Others

/

##### Tool

Operating tool

/

Screwdriver

1.0x4.0mm, Slotted screwdriver

#### Business data

Order number

10090000027

Packing unit

50

Minimum order quantity

Products weight (without packaging)	21.78
-------------------------------------	-------