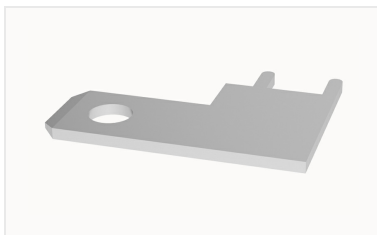


## Overview

### Product information



**K27-00A(H)-109000000037**

Metal Part, Contact surface: Tin

### Product advantages

☒ Suitable for in-unit installation

### Product certification

## Technical data

### Product drawing

### 3D model

☐

### Processing notes

Process

Wave soldering/manual soldering

### Item properties

Type of installation

PCB welding

Number of potentials

1

Pluggable or not

no

### Material data

Environmental items

Compliant with REACH/RoHS

Contact material

Copper alloy

Contact zone metal surface

tin-plated

## Accessories

Business data	
Order number	10900000037
Packing unit	2500
Minimum order quantity	
Products weight (without packaging)	0.93