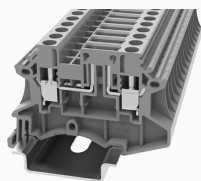


## Overview

### Product information



## DC4-TG-11020000186

Screw type Din-Rail TB, connector method: Screw/plug-in connector, Rated voltage: 500 V, Rated current: 20 A, Number of connectors: 2, Number of potentials: 1, Cross section: 0.5 mm<sup>2</sup> - 4mm<sup>2</sup>, AWG: 22 - 10, Width: 6.1 mm, Color: gray, Mounting type: NS 35/7.5, NS 35/15

### Product advantages

- ☑ Disconnect terminal blocks;
- ☑ Steel screw connection technology, reliable connection;
- ☑ Equipped with dual-channel bridge wells, circuit connection testing is more flexible;
- ☑ Unique plug-in bridge, high circuit connection efficiency;
- ☑ The box has a baffle to prevent mis-insertion;
- ☑ Can be matched with marker strips to avoid incorrect insertion of wires.

### Product certification



## Technical data

### Product drawing

### 3D model

□

### Overview

Number of rows	1
number of connections	2
Open-end side panels	Yes
Insulation Materials	PA
Flame retardant grade, in line with UL 94	V0
Insulating material group	I

standard test	IEC60947-7-1
Connection method	screw connection

#### Dimension

width	6.1mm
End plate width	1.5mm
Height	40mm
NS 35/7,5 Height	41.5mm
NS 35/15 Height	49mm
length	56.8mm

#### Wiring data

Strip length	8~9mm
Conductor cross section solid AWG	22~10
Conductor cross section solid	0.5~6mm <sup>2</sup>
Conductor cross section flexible	0.5~4mm <sup>2</sup>
Conductor cross section flexible (ferrule without plastic sleeve)	0.5~4mm <sup>2</sup>
Conductor cross section flexible (ferrule with plastic sleeve)	0.5~2.5mm <sup>2</sup>
2 flexible conductors with a TWIN ferrule	0.5~1.5mm <sup>2</sup>
Screw type	Slotted screw
screw thread	M3
Tightening torque	0.6N.m

#### IEC Electrical parameters

Rated current (III / 3)	20A
-------------------------	-----

#### IEC Electrical parameters

Rated voltage (III / 3)	500V
-------------------------	------

Rated surge voltage	6KV
UL Electrical parameters	
Rated voltage	600V
Rated current	16A
Environmental conditions	
Ambient temperature (operation)	-40 °C ~ 105 °C (depending on derating curve)
Relative humidity (storage/transport)	25%~75%
Ambient temperature (storage / transport)	-25°C~60°C
Mechanical performance test	
Mechanical strength	Passed the test
Fixing support	Passed the test
Rotational Pull Test	Passed the test
Electrical performance test	
Voltage drop	≤3.2mV
Temperature rise test	≤45 K
Safety test	
Anti-finger touch	Passed the test
Environmental protection	
RoHS	No excessive harmful substances
REACH SVHC	Lead 7439-92-1

Accessories

Marker	
Top marker	/
Side marker	ZB6

Marker support	/
----------------	---

#### Accessories

Slotted screwdriver size (Blade thickness x Width)	0.6×3.5
Bridge	DFA4
End cover	D-DC4-TG
Partition plate	/

#### Installation

End clamp	E-WS N / E-PC-1100A
Terminal strip marker support	KLM3-20x8 / KLM3-44x8 / DLM2 / DBE-1 / DBE-2
DIN rail	NS35/7.5 & NS35/15

#### Business data

Order number	11020000186
Packing unit	50
Minimum order quantity	50
Products weight (without packaging)	8.92