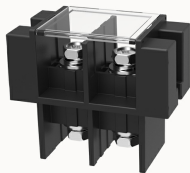


Overview

Product information



DG200-A-12010001046

Up and down transfer terminal, Rated current: 200A, Rated voltage (UL): 1000V, Croos section: 6~3/0 AWG, Pitch: 27mm, Color: black, contact surface: Ni

Product advantages

- ☒ Screw connection for worldwide use
- ☒ Barrier wiring structure, stable and reliable connecion
- ☒ High current eletrical connections at power end can be met

Product certification



Technical data

Product drawing

3D model

□

Wiring capacity

torque

5.6N.m

Connectable conductor cross section

6~3/0 AWG

Electrical parameters UL

Rated voltage

1000V

Rated current

200A

Connection capacity

Torque

6.0N.m

Item properties

Type of installation	panel
Pin arrangement	Single row in a straight line
Connection method	Screw connection
Screwdriver	Phillips screwdriver
screw thread	M8
Pitch	27mm
Number of potentials	2
Pluggable or not	no
Number of rows	1

Material data

Environmental items	Compliant with REACH/RoHS
Contact material	Copper alloy
Contact point metal surface	Nickel plating
Insulation Materials (main class)	PA66+GF
Insulating material group	IIIa
Flammability rating	UL94V-0

Mechanical tests

Test Specification	UL1059
--------------------	--------

Environmental data

Ambient temperature (operation)	-40°C~105°C(depending on derating curve)
---------------------------------	--

Accessories

Business data

Order number	12010001046
--------------	-------------

Packing unit	12
Minimum order quantity	12
Products weight (without packaging)	2496