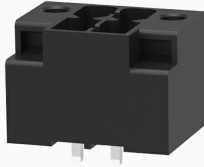


Overview

Product information

**15EDGVHCM-THR-3.5-10030009619**

Pluggable terminal blocks, Rated current: 9.5A. Rated voltage
(III/2) : 200V, pitch: 3.5mm, Color: Black, Contact surface : Tin

Product advantages

- ✓ Suitable for THR welding process
- ✓ Universal installation method to ensure a high degree of flexibility in device design
- ✓ Multi-layer wire connection can achieve higher contact density

Product certification



Technical data

Product drawing

3D model

□

Packaging information

Type of packaging

box-packed

Processing notes

Process

Reflow soldering/wave soldering/manual soldering

Electrical parameters UL

Rated voltage (B)

300V

Rated voltage (D)

300V

Rated current (B)

8A

Rated current (D)

8A

Rated current (C)

8A

Electrical parameters IEC

Rated voltage	200V
Rated voltage(III/3)	200V
Rated current	9.5A
Rated voltage(III/2)	200V
Rated voltage(II/2)	400V
Rated surge voltage(III/3)	2.5KV
Rated surge voltage(III/2)	2.5KV
Rated surge voltage(II/2)	2.5KV

Item properties

Connection direction	90°
Type of installation	PCB welding
Pin arrangement	Double-row in a straight line
Pitch	3.5mm
Number of potentials	4
Pluggable or not	Yes
Number of rows	2

Material data

Environmental items	Compliant with REACH/RoHS
Contact material	copper
Contact point metal surface	tin-plated
Insulation Materials	High temperature resistant materials
Insulating material group	IIIa
Flammability rating	UL94V-0

Mechanical tests

Test Specification

IEC61984/ UL1059

Environmental data

Relative humidity (storage/transport)

30% ~ 70%

Ambient temperature (assembly)

-5℃~100℃

Ambient temperature (operation)

-40℃~120℃(depending on derating curve)

Ambient temperature (storage / transport)

-40℃~70℃

Accessories

Tool

Screwdriver

/

Operating tool

/

Accessories

Coding strip

15EDGKNH-PWI

Bridge

/

Marking strip

/

Others

/

Business data

Order number

10030009619

Packing unit

2490

Minimum order quantity

Products weight (without packaging)

0.8