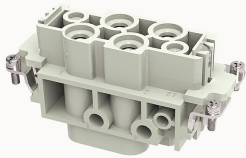


## Overview

## Product information

**DK-4/0-F-21020000123**

Heavy-duty insert, Number of contacts: 4/0+PE, Dimension: 16B, Rated voltage : 690V, Rated current: 80A, Female insert, Screw connector

## Product advantages

- ✓ Screw connection technology, applicable to a wide range of wire specifications;
- ✓ No need special tools, easy to operate;
- ✓ Less materials, easy to manage;
- ✓ With grounding protection.

## Product certification



## Technical data

## Product drawing

## 3D model

□

## Marking

classification

Insert

Series

DK

## versions

Connection method

Screw connection

Female/Male

Female

Dimension

16B

Number of positions

4/0

PE Contacts

Yes

Material characteristics

Material (insert)	Polycarbonate (PC)
Materia (Contact)	Copper alloy
Surface (Contact)	Silver plated
Flammability rating	V-0
color	Grey/White (RAL 7032)
RoHS	Comply with RoHS exemptions

Electrical parameters

Rated current	80A
	690V
Rated pulse voltage	8KV
Pollution level	3
On the basis of UL /CSARated current	600V
Insulation resistance	≥10000MΩ
Contact resistance	≤0.3mΩ
Temperature range	-40℃~+125℃
working life-mating cycles	≥500 time
Strip length	14mm
Rated torque	1.2N.m(1.5mm²) 2N.m(2.5mm²) 3N.m(4/6/10/16mm²)
Conductor cross sections (mm²)	1.5-16mm²
Conductor cross sections(AWG)	16-6AWG

Standards

Connection meets standards	DIN EN 60664 DIN EN 61984
----------------------------	---------------------------

Accessories

Accessories

Screwdriver

/

Business data

Order number	21020000123
Packing unit	100
Minimum order quantity	5
Products weight (without packaging)	115