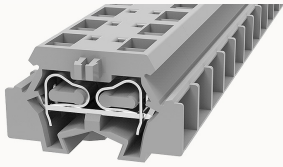


## Overview

## Product information

**WS2.5T-DB-11030000197**

Spring-cage type Din-Rail TB, connector method: Spring-cage/plug-in connector, Rated voltage: 800 V, Rated current: 24 A, Number of connectors: 4, Number of potentials: 1, Cross section: 0.2 mm<sup>2</sup> - 2.5 mm<sup>2</sup>, AWG: 28 - 14, Width: 10 mm, Color: gray, Mounting type: Panel installation

## Product advantages

- ✓ spring-cage connection technology, good anti-vibration performance;
- ✓ Use an ordinary flat-blade screwdriver, you can easily wire and take the wire;
- ✓ Panel installation, no need to install on the guide rail;
- ✓ Can be matched with marker strips to avoid incorrect insertion of wires.

## Product certification



## Technical data

## Product drawing

## 3D model

[□](#)

## Overview

|   |                        |
|---|------------------------|
| Connection method                         | spring-cage connection |
| Number of rows                            | 1                      |
| number of connections                     | 4                      |
| Open-end side panels                      | Yes                    |
| Insulation Materials                      | PA                     |
| Flame retardant grade, in line with UL 94 | V0                     |
| Insulating material group                 | I                      |

|               |              |
|---------------|--------------|
| standard test | IEC60947-7-1 |
|---------------|--------------|

#### Dimension

|                 |       |
|-----------------|-------|
| width           | 10mm  |
| End plate width | 2.5mm |
| Height          | 18mm  |
| length          | 28mm  |

#### Wiring data

|   |                        |
|---|------------------------|
| Strip length  | 8~9mm                  |
| Conductor cross section solid AWG                                 | 28~14                  |
| Conductor cross section solid                                     | 0.2~2.5mm <sup>2</sup> |
| Conductor cross section flexible                                  | 0.2~2.5mm <sup>2</sup> |
| Conductor cross section flexible (ferrule without plastic sleeve) | 0.2-2.5mm <sup>2</sup> |
| Conductor cross section flexible (ferrule with plastic sleeve)    | 0.2-2.5mm <sup>2</sup> |
| 2 flexible conductors with a TWIN ferrule                         | 0.5mm <sup>2</sup>     |

#### IEC Electrical parameters

|                         |      |
|-------------------------|------|
| Rated voltage (III / 3) | 800V |
| Rated current (III / 3) | 24A  |
| Rated surge voltage     | 8KV  |

#### UL Electrical parameters

|               |      |
|---------------|------|
| Rated voltage | 300V |
| Rated current | 15A  |

#### Environmental conditions

|                                       |   |
|---------------------------------------|---|
| Ambient temperature (operation)       | -40 °C ~ 105 °C (depending on derating curve) |
| Relative humidity (storage/transport) | 25%~75%                                       |

|   |                                 |
|---|---------------------------------|
| Ambient temperature (storage / transport) | -25℃~60℃                        |
| Mechanical performance test               |                                 |
| Mechanical strength                       | Passed the test                 |
| Fixing support                            | Passed the test                 |
| Rotational Pull Test                      | Passed the test                 |
| Electrical performance test               |                                 |
| Voltage drop                              | ≤3.2mV                          |
| Temperature rise test                     | ≤45 K                           |
| Safety test                               |                                 |
| Anti-finger touch                         | Passed the test                 |
| Environmental protection                  |                                 |
| RoHS                                      | No excessive harmful substances |
| REACH SVHC                                | Lead 7439-92-1                  |

## Accessories

### Marker

|                |      |
|----------------|------|
| Top marker     | /    |
| Side marker    | DEK5 |
| Marker support | /    |
| Warning cover  | /    |

### Accessories

|  |         |
|--|---------|
| Slotted screwdriver size (Blade thickness x Width) | 0.5×3.5 |
| Adjacent jumper (2P)                               | /       |
| Alternate jumper (2P)                              | /       |
| Staggered jumper (2P)                              | /       |

|           |            |
|-----------|------------|
| End cover | D-WS2.5-DB |
|-----------|------------|

#### Installation

|                               |                                       |
|-------------------------------|---------------------------------------|
| DIN rail mounting adapter     | WHH-WS1.5-DB                          |
| End clamp                     | E-WS N / E-PC-1100A                   |
| Terminal strip marker support | KLM3-20x8 / KLM3-44x8 / DBE-1 / DBE-2 |
| DIN rail                      | NS35/7.5-1000-00A(H)                  |

#### Marking & Installation

|               |      |
|---------------|------|
| Marking strip | DEK5 |
|---------------|------|

#### Accessories

|              |              |
|--------------|--------------|
| End cover    | D-WS2.5-DB   |
| Bridge       | WFE-2.5      |
| Rail adapter | WHH-WS1.5-DB |

#### Business data

|                                     |             |
|-------------------------------------|-------------|
| Order number                        | 11030000197 |
| Packing unit                        | 100         |
| Minimum order quantity              | 100         |
| Products weight (without packaging) | 4.3         |