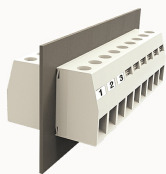


Overview

Product information



DGH50-10090000013

Through-wall terminal blocks, Rated current: 150A. Rated voltage (III/2) : 1000V, Width: 18.8mm, Color: gray, Contact surface : Tin

Product advantages

- ☑ Screw connection technology, safe and reliable
- ☑ Through-wall installation, free positioning

Product certification

Technical data

Product drawing

3D model

□

Connection capacity

Conductor cross section solid	16~50mm ²
Conductor cross section flexible	16~50mm ²
AWG	6~2/0AWG
Strip length	24mm

Electrical parameters UL

Rated voltage (B)	600V
Rated voltage (C)	600V
Rated voltage (D)	600V
Rated current (B)	170A
Rated current (D)	5A

Rated current (C)	170A
-------------------	------

Electrical parameters IEC

Rated voltage(III/3)	690V
Rated current	500V
	150A
Rated voltage(III/2)	1000V
Rated voltage(II/2)	1000V
Rated surge voltage(III/3)	8KV
Rated surge voltage(III/2)	8KV
Rated surge voltage(II/2)	8KV

Item properties

Type of installation	panel
Connection method	Screw connection
Screwdriver	Slotted screwdriver
screw thread	M6
Pitch	18.8mm
Number of potentials	1
Pluggable or not	Yes
Number of rows	1

Material data

Environmental items	Compliant with REACH/RoHS
Contact material	copper
Contact point metal surface	tin-plated
Contact zone metal surface	tin-plated
Insulation Materials	PA66

Insulating material group	I
Flammability rating	UL94V-0
Mechanical tests	
Test Specification	IEC60947/UL1059
Environmental data	
Ambient temperature (operation)	-40°C~105°C(depending on derating curve)

Accessories

Accessories	
Coding strip	/
Bridge	/
Marking strip	/
Others	/
Tool	
Operating tool	/
Screwdriver	/

Business data	
Order number	10090000013
Packing unit	20
Minimum order quantity	30
Products weight (without packaging)	120