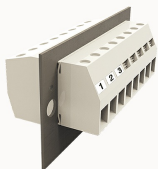


Overview

Product information



DGH25-10090000007

Through-wall terminal blocks, Rated current: 101A. Rated voltage
(III/3) : 500V, Width: 15.0mm, Color: gray, Contact surface : Tin

Product advantages

- ☑ Screw connection technology, safe and reliable
- ☑ Through-wall installation, free positioning

Product certification

Technical data

Product drawing

3D model

□

Connection capacity

Conductor cross section solid	6~35mm ²
Conductor cross section flexible	10~25mm ²
AWG	8~2AWG
Torque	4N.m
Strip length	19mm

Electrical parameters UL

Rated voltage (B)	600V
Rated voltage (C)	600V
Rated voltage (D)	600V
Rated current (B)	115A

Rated current (D)	5A
Rated current (C)	115A

Electrical parameters IEC

Rated voltage(III/3)	500V
Rated current	500V
	101A
Rated surge voltage(III/3)	6KV

Item properties

Type of installation	panel
Connection method	Screw connection
Screwdriver	Slotted screwdriver
screw thread	M5
Pitch	15.1mm
Number of potentials	1
Pluggable or not	Yes
Number of rows	1

Material data

Environmental items	Compliant with REACH/RoHS
Contact material	copper
Contact point metal surface	tin-plated
Contact zone metal surface	tin-plated
Insulation Materials	PA66
Insulating material group	I
Flammability rating	UL94V-0

Mechanical tests

Test Specification	IEC60947/UL1059
--------------------	-----------------

Environmental data

Ambient temperature (operation)	-40°C~105°C(depending on derating curve)
---------------------------------	--

Accessories

Accessories

Coding strip	ZB15
--------------	------

Bridge	/
--------	---

Marking strip	/
---------------	---

Others	/
--------	---

Tool

Operating tool	/
----------------	---

Screwdriver	/
-------------	---

Business data

Order number	10090000007
--------------	-------------

Packing unit	12
--------------	----

Minimum order quantity	30
------------------------	----

Products weight (without packaging)	133
-------------------------------------	-----