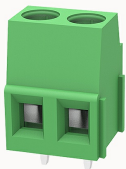


Overview

Product information



DG500-5.0-10040000126

PCB terminal blocks, Rated current: 18A, Rated voltage (III/2) 250V, Cross section: 1.0~2.5mm², pitch: 5.0mm, connector method: Screw connector with tension sleeve, Color: green, Contact surface : Tin

Product advantages

- ☒ Fixed screw connection technology, safe and reliable
- ☒ Different poles can be combined through the side lock
- ☒ Universal installation method to ensure a high degree of flexibility in device design

Product certification



Technical data

Product drawing

3D model

□

Processing notes

Process

Wave soldering/manual soldering

Connection capacity

Conductor cross section solid

1.0~2.5mm²

Conductor cross section flexible

1.0~2.5mm²

AWG

30~12AWG

Torque

0.5N.m

Strip length

6mm

Electrical parameters UL

Rated voltage (B)	300V
Rated voltage (D)	300V
Rated current (B)	20A
Rated current (D)	10A

Electrical parameters IEC

Rated voltage	250V
Rated current	18A
Rated voltage(III/2)	250V
Rated surge voltage(III/2)	2KV

Item properties

Connection direction	0°
Type of installation	PCB welding
Pin arrangement	Single row in a straight line
Connection method	Screw connection
Screwdriver	Slotted screwdriver
screw thread	M3
Pitch	5mm
Number of potentials	2
Pluggable or not	no
Number of rows	1

Material data

Environmental items	Compliant with REACH/RoHS
Contact material	Copper alloy
Contact point metal surface	tin-plated
Insulation Materials	PA66

Insulating material group	I
Flammability rating	UL94V-0
Mechanical tests	
Test Specification	UL1059/IEC60998
Environmental data	
Ambient temperature (operation)	-40°C~105°C(depending on derating curve)

Accessories	
Accessories	
Coding strip	/
Bridge	DG019-5.0
Marking strip	/
Others	/
Tool	
Operating tool	/
Screwdriver	0.6x3.5mm, Slotted screwdriver

Business data	
Order number	10040000126
Packing unit	500
Minimum order quantity	30
Products weight (without packaging)	2.66