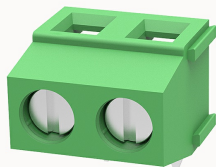


Overview

Product information



DG127R-5.08-10040001468

PCB terminal blocks, Rated current: 15A, Rated voltage (III/2) 250V, Cross section: 0.75-1.5mm², pitch: 5.08mm, connector method: Screw connector with tension sleeve, Color: green, Contact surface : Tin

Product advantages

- ☒ Fixed screw connection technology, safe and reliable
- ☒ Different poles can be combined through the side lock
- ☒ Universal installation method to ensure a high degree of flexibility in device design

Product certification



Technical data

Product drawing

3D model

□

Processing notes

Process

Wave soldering/manual soldering

Connection capacity

Conductor cross section solid

0.75~1.5mm²

Conductor cross section flexible

0.75~1.5mm²

AWG

26~14AWG

Torque

0.4N.m

Strip length

6mm

Electrical parameters UL

Rated voltage (B)	300V
Rated current (B)	12A

Electrical parameters IEC

Rated voltage	250V
Rated current	15A
Rated voltage(III/2)	250V
Rated surge voltage(III/2)	2KV

Item properties

Connection direction	90°
Type of installation	PCB welding
Pin arrangement	Single row in a straight line
Connection method	Screw connection
Screwdriver	Slotted screwdriver
screw thread	M2.5
Pitch	5.08mm
Number of potentials	2
Pluggable or not	no
Number of rows	1

Material data

Environmental items	Compliant with REACH/RoHS
Contact material	Copper alloy
Contact point metal surface	tin-plated
Insulation Materials	PA66
Insulating material group	I
Flammability rating	UL94V-0

Mechanical tests

Test Specification

UL1059/IEC60998

Environmental data

Ambient temperature (operation)

-40°C~105°C(depending on derating curve)

Accessories

Accessories

Coding strip

/

Bridge

DG019-5.0

Marking strip

/

Others

/

Tool

Operating tool

/

Screwdriver

0.6x3.5mm, Slotted screwdriver

Business data

Order number

10040001468

Packing unit

500

Minimum order quantity

30

Products weight (without packaging)

1.78