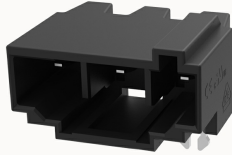


Overview

Product information

**9EDGRC-7.5-10020001602**

Pluggable terminal blocks, Rated current: 20A, Rated voltage
(III/2) : 630V, pitch: 7.5mm, Color: black, Contact surface : Tin

Product advantages

- ✓ Universal installation method to ensure a high degree of flexibility in device design
- ✓ The plug direction is parallel to the PCB
- ✓ Fixed pin structure, firmer PCB installation

Product certification



Technical data

Product drawing

3D model

□

Processing notes

Process

Wave soldering/manual soldering

Electrical parameters UL

Rated voltage (B)	300V
Rated voltage (C)	300V
Rated voltage (D)	600V
Rated current (B)	16A
Rated current (D)	5A
Rated current (C)	16A

Electrical parameters IEC

Rated voltage	630V
Rated voltage(III/3)	500V
Rated current	20A
Rated voltage(III/2)	630V
Rated voltage(II/2)	1000V
Rated surge voltage(III/3)	6KV
Rated surge voltage(III/2)	6KV
Rated surge voltage(II/2)	6KV

Item properties

Connection direction	0°
Type of installation	PCB welding
Pin arrangement	Single row in a straight line
Pitch	7.5mm
Number of potentials	3
Pluggable or not	Yes
Number of rows	1

Material data

Environmental items	Compliant with REACH/RoHS
Contact material	copper
Contact zone metal surface	Gold plate
Insulation Materials	High temperature resistant materials
Insulating material group	IIIa
Flammability rating	UL94V-0

Mechanical tests

Test Specification	IEC61984/ UL1059
--------------------	------------------

Environmental data

Ambient temperature (operation)

-40°C~130°C(depending on derating curve)

Accessories

Tool

Screwdriver

/

Operating tool

/

Accessories

Coding strip

/

Bridge

/

Marking strip

/

Others

/

Business data

Order number

10020001602

Packing unit

630

Minimum order quantity

30

Products weight (without packaging)

3.274