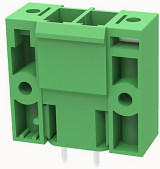


## Overview

## Product information

**5EDGVM-7.62-10020000976**

Pluggable terminal blocks, Rated current: 32A. Rated voltage  
(III/3) : 400V, pitch: 7.62mm, Color: green, Contact surface : Tin

## Product advantages

- ✓ Universal installation method to ensure a high degree of flexibility in device design
- ✓ The plug direction is perpendicular to PCB

## Product certification



## Technical data

## Product drawing

## 3D model

[□](#)

## Processing notes

Process

Wave soldering/manual soldering

## Electrical parameters UL

Rated voltage (B)	300V
Rated voltage (C)	300V
Rated voltage (D)	300V
Rated current (B)	30A
Rated current (D)	10A
Rated current (C)	30A

## Electrical parameters IEC

Rated voltage	400V
Rated current	32A
Rated voltage(III/2)	400V
Rated surge voltage(III/2)	4KV

#### Item properties

Connection direction	90°
Type of installation	PCB welding
Pin arrangement	Double-row in a straight line
Pitch	7.62mm
Number of potentials	2
Pluggable or not	Yes
Number of rows	1

#### Material data

Environmental items	Compliant with REACH/RoHS
Contact material	copper
Contact point metal surface	tin-plated
Insulation Materials	PBT
Insulating material group	IIIa
Flammability rating	UL94V-0

#### Mechanical tests

Test Specification	IEC61984/ UL1059
--------------------	------------------

#### Environmental data

Ambient temperature (operation)	-40℃~105℃(depending on derating curve)
---------------------------------	--

Tool	
Screwdriver	/
Operating tool	/
Accessories	
Coding strip	/
Bridge	/
Marking strip	/
Others	5EDG-PWI

Business data	
Order number	10020000976
Packing unit	250
Minimum order quantity	30
Products weight (without packaging)	11.5