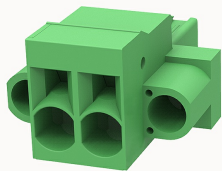


Overview

Product information



5EDGKDM-7.62-10020003042

Pluggable terminal blocks, Rated current: 41A. Rated voltage
(III/2) : 1000V, pitch: 7.62mm, Color: green, Contact surface : Tin

Product advantages

- ☒ Adapt to multi-type sockets, device design is highly flexible
- ☒ Keying parts can be installed
- ☒ Universal installation method, suitable for various situations

Product certification



Technical data

Product drawing

3D model

□

Connection capacity

Conductor cross section solid	0.2~10mm ²
Conductor cross section flexible	0.2~10mm ²
AWG	24~8AWG
Strip length	14mm

Electrical parameters UL

Rated voltage (B)	600V
Rated current (B)	35A

Electrical parameters IEC

Rated voltage	1000V
---------------	-------

Rated voltage(III/3)	1000V
Rated current	41A
Rated voltage(III/2)	1000V
Rated voltage(II/2)	1000V
Rated surge voltage(III/3)	8KV
Rated surge voltage(III/2)	8KV
Rated surge voltage(II/2)	6KV

Item properties

Connection direction	0°
Pitch	7.62mm
Number of potentials	2
Pluggable or not	Yes
Number of rows	1

Material data

Environmental items	Compliant with REACH/RoHS
Contact material	copper
Contact point metal surface	tin-plated
Insulation Materials	PA66
Insulating material group	I
Flammability rating	UL94V-0

Mechanical tests

Test Specification	IEC61984/ UL1059
--------------------	------------------

Environmental data

Ambient temperature (operation)	-40℃~105℃(depending on derating curve)
---------------------------------	--

Accessories

Accessories

Coding strip	5EDG-PWI
Bridge	/
Marking strip	/
Others	/

Tool

Operating tool	/
Screwdriver	/

Business data

Order number	10020003042
Packing unit	160
Minimum order quantity	30
Products weight (without packaging)	11.87