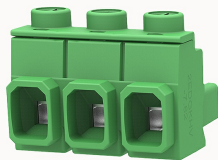


Overview

Product information



2EDGKHV-7.62-10010004798

Pluggable terminal blocks, Rated current: 16A. Rated voltage
(III/2) : 1000V, pitch: 7.62mm, Color: green, Contact surface : Tin

Product advantages

- ☒ Adapt to multi-type sockets, device design is highly flexible
- ☒ Keying parts can be installed
- ☒ Universal installation method, suitable for various situations

Product certification



Technical data

Product drawing

3D model

□

Connection capacity

Conductor cross section solid	0.2~2.5mm ²
Conductor cross section flexible	0.2~2.5mm ²
AWG	30~12AWG
Torque	0.6N.m
Strip length	7mm

Electrical parameters UL

Rated voltage (B)	600V
Rated voltage (C)	600V
Rated current (B)	20A

Rated current (C)	20A
-------------------	-----

Electrical parameters IEC

Rated voltage	1000V
Rated voltage(III/3)	1000V
Rated current	16A
Rated voltage(III/2)	1000V
Rated voltage(II/2)	1000V
Rated surge voltage(III/3)	8KV
Rated surge voltage(III/2)	8KV
Rated surge voltage(II/2)	6KV

Item properties

Connection direction	0°
Connection method	Screw connection
Screwdriver	Slotted screwdriver
screw thread	M3
Pitch	7.62mm
Number of potentials	3
Pluggable or not	Yes
Number of rows	1

Material data

Environmental items	Compliant with REACH/RoHS
Contact material	Copper alloy
Contact point metal surface	tin-plated
Contact zone metal surface	tin-plated
Insulation Materials	PA66

Insulating material group	I
Flammability rating	UL94V-0
Mechanical tests	
Test Specification	IEC61984/ UL1059
Environmental data	
Ambient temperature (operation)	-40°C~105°C(depending on derating curve)

Accessories	
Tool	
Screwdriver	0.6x3.5, Slotted screwdriver
Operating tool	/
Accessories	
Coding strip	2EDG-PWI
Bridge	/
Marking strip	/
Others	/

Business data	
Order number	10010004798
Packing unit	100
Minimum order quantity	30
Products weight (without packaging)	6.16