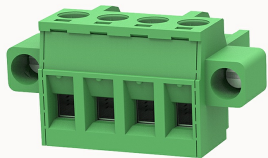


Overview

Product information



2EDGKFM-5.0-10010004283

Pluggable terminal blocks, Rated current: 20A, Rated voltage
(III/2) : 320V, pitch: 5.0mm, Color: green, Contact surface : Tin

Product advantages

- ☑ Adapt to multi-type sockets, device design is highly flexible
- ☑ Keying parts can be installed
- ☑ Universal installation method, suitable for various situations

Product certification



Technical data

Product drawing

3D model

□

Connection capacity

Conductor cross section solid	0.2~2.5mm ²
Conductor cross section flexible	0.2~2.5mm ²
AWG	28~12AWG
Torque	0.5N.m
Strip length	7mm

Electrical parameters UL

Rated voltage (B)	300V
Rated voltage (D)	300V
Rated current (B)	15A

Rated current (D)	10A
-------------------	-----

Electrical parameters IEC

Rated voltage	320V
Rated current	20A
Rated voltage(III/2)	320V
Rated surge voltage(III/2)	4KV

Item properties

Connection direction	0°
Connection method	Screw connection
Screwdriver	Slotted screwdriver
screw thread	M3
Pitch	5mm
Number of potentials	4
Pluggable or not	Yes
Number of rows	1

Material data

Environmental items	Compliant with REACH/RoHS
Contact material	Copper alloy
Contact point metal surface	tin-plated
Contact zone metal surface	tin-plated
Insulation Materials	PA66
Insulating material group	I
Flammability rating	UL94V-0

Mechanical tests

Test Specification	IEC61984/ UL1059
--------------------	------------------

Environmental data

Ambient temperature (operation)

-40 °C~105 °C(depending on derating curve)

Accessories

Tool

Screwdriver	0.6x3.5, Slotted screwdriver
Operating tool	/

Accessories

Coding strip	2EDG-PWI
Bridge	DG019-5.0
Marking strip	/
Others	/

Business data

Order number	10010004283
Packing unit	560
Minimum order quantity	30
Products weight (without packaging)	6.64