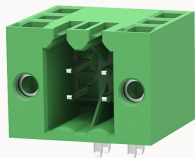


Overview

Product information



15EDGRHDM-3.5-10030000483

Pluggable terminal blocks, Rated current: 10A. Rated voltage (III/2) : 125V, pitch: 3.5mm, Color: green, Contact surface : Tin

Product advantages

- ☒ Universal installation method to ensure a high degree of flexibility in device design
- ☒ Multi-layer wire connection can achieve higher contact density

Product certification



Technical data

Product drawing

3D model

□

Processing notes

Process

Wave soldering/manual soldering

Connection capacity

Torque

0.2N.m

Electrical parameters UL

Rated voltage (B)

150V

Rated current (B)

10A

Rated current (C)

10A

Electrical parameters IEC

Rated voltage

250V

Rated voltage(III/3)	80V
Rated current	10A
Rated voltage(III/2)	125V
Rated voltage(II/2)	250V
Rated surge voltage(III/3)	2.5KV
Rated surge voltage(III/2)	2.5KV
Rated surge voltage(II/2)	2.5KV

Item properties

Connection direction	0°
Type of installation	PCB welding
Pin arrangement	Double-row in a straight line
Pitch	3.5mm
Number of potentials	4
Pluggable or not	Yes
Number of rows	2

Material data

Environmental items	Compliant with REACH/RoHS
Contact material	Copper alloy
Contact zone metal surface	tin-plated
Insulation Materials	PA66
Insulating material group	I
Flammability rating	UL94V-0

Mechanical tests

Test Specification	IEC61984/ UL1059
--------------------	------------------

Environmental data

Ambient temperature (operation)	-40°C~105°C (depending on derating curve)
---------------------------------	---

Accessories

Tool

Screwdriver	/
Operating tool	/

Accessories

Coding strip	/
Bridge	/
Marking strip	/
Others	15EDGKNH-PWP

Business data

Order number	10030000483
Packing unit	1630
Minimum order quantity	30
Products weight (without packaging)	2.79