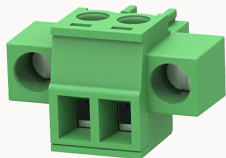


## Overview

### Product information



**15EDGKM-3.5-10010000713**

Pluggable terminal blocks, Rated current: 7A. Rated voltage  
(II/2) : 250V, pitch: 3.5mm, Color: green, Contact surface : Tin

### Product advantages

- ☑ Adapt to multi-type sockets, device design is highly flexible
- ☑ Keying requirements can be met
- ☑ Universal installation method, suitable for various situations

### Product certification



## Technical data

### Product drawing

### 3D model

□

### Connection capacity

Conductor cross section solid	0.5~1.5mm <sup>2</sup>
Conductor cross section flexible	0.5~1.5mm <sup>2</sup>
AWG	28~16AWG
Torque	0.2N.m
Strip length	7mm

### Electrical parameters UL

Rated voltage (B)	300V
Rated voltage (D)	300V
Rated current (B)	8A

Rated current (D)	8A
-------------------	----

Electrical parameters IEC

Rated voltage	250V
Rated current	7A
Rated voltage(II/2)	250V
Rated surge voltage(II/2)	2.5KV

Item properties

Connection direction	0°
Connection method	Screw connection
Screwdriver	Slotted screwdriver
screw thread	M2
Pitch	3.5mm
Number of potentials	2
Pluggable or not	Yes
Number of rows	1

Material data

Environmental items	Compliant with REACH/RoHS
Contact material	Copper alloy
Contact zone metal surface	tin-plated
Insulation Materials	PA66
Insulating material group	I
Flammability rating	UL94V-0

Mechanical tests

Test Specification	IEC61984/ UL1059
--------------------	------------------

Environmental data

Ambient temperature (operation)	-40°C~105°C(depending on derating curve)
---------------------------------	--

## Accessories

### Tool

Screwdriver	0.4x2.5,Slotted screwdriver
Operating tool	/

### Accessories

Coding strip	/
Bridge	/
Marking strip	/
Others	/

## Business data

Order number	10010000713
Packing unit	200
Minimum order quantity	30
Products weight (without packaging)	2.204